



Fig.1: The EPGC building is located in Avenida Española



Fig.2: Main facade of the EPGC building



Fig.3 : surroundings of the EPGC building



Fig.4 : Small garden at the main entrance



Fig.5: Glazed door of the main entrance

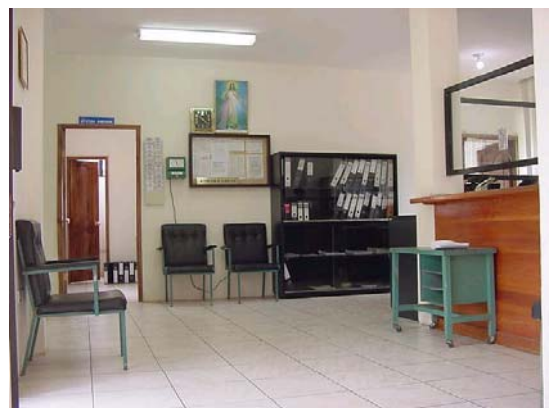


Fig. 6: Commercial area with the counters for public



Fig. 7: Technical office in the ground floor of the building



Fig. 8: Staircase with side windows

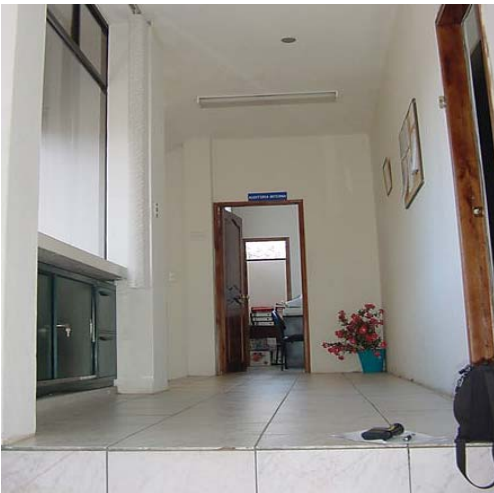


Fig.9 : Corridor of the second floor



Fig. 10 : General manager room in the Second floor



Fig. 11: Terrace on the roof of the building



Fig. 12 : Glazed dome and side windows in the top of the staircase



Fig. 13 : Policrome single pane window



Fig. 14 : Adjustable internal textile slats





Fig. 15 : Ceiling fan replacing the 1<sup>st</sup> Lennox air conditioning unit which does not work and compact low consumption lamp



Fig.16: Panasonic air conditioning unit



Fig. 17: Panasonic technical specifications



Fig. 18: Panasonic A.C.U. in the South facade of EPGG building



Fig. 19: 2<sup>nd</sup> Lennox internal unit in the meeting room



Fig. 20: 2<sup>nd</sup> Lennox external unit



Fig. 21: Technical specifications of the Lennox A.C Fig.22: Tube fluorescent lamps inside diffusing glass ceiling bowl

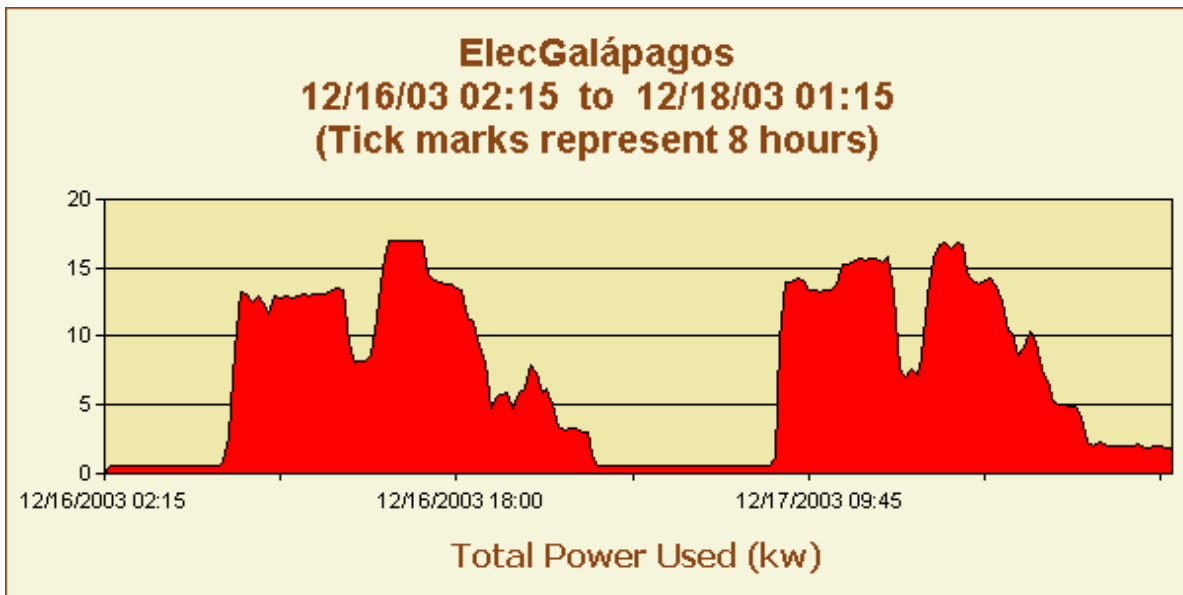


Fig. 23 : Load profiles of ElecGalápagos office in two December days (from Ecosage monitoring)

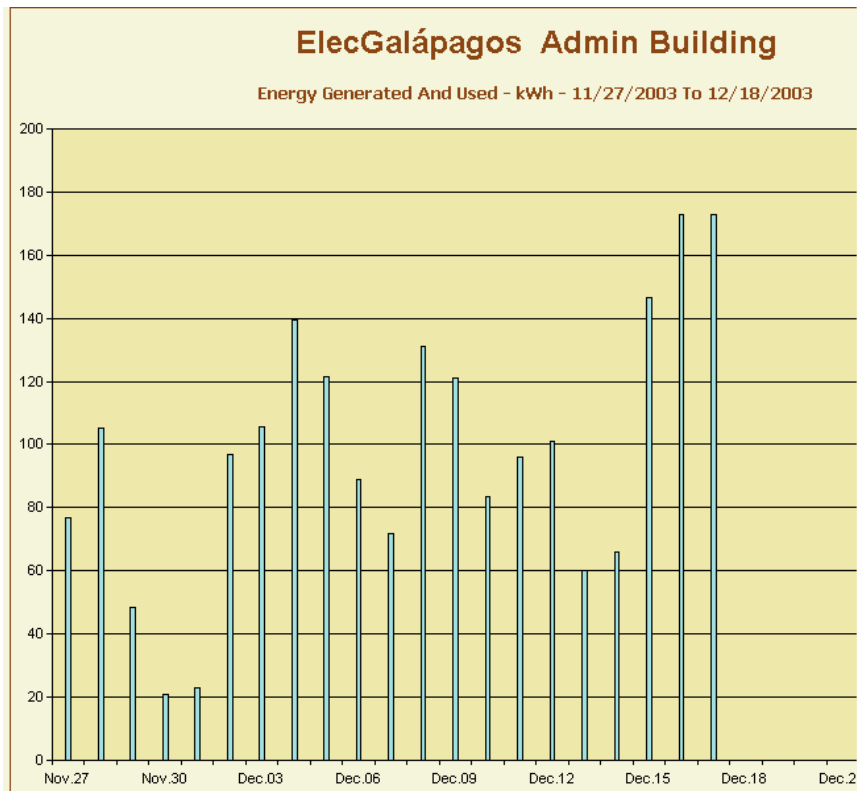


Fig. 24 : Energy consumption of ElecGalápagos office in several December days

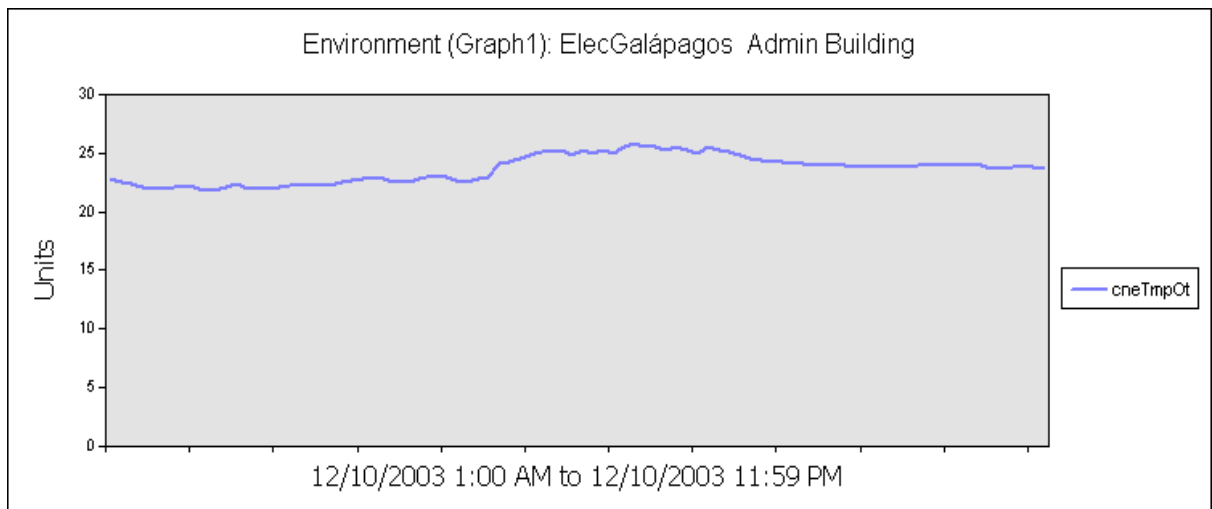


Fig 25 : Outdoor temperature (units °C) on December, 10

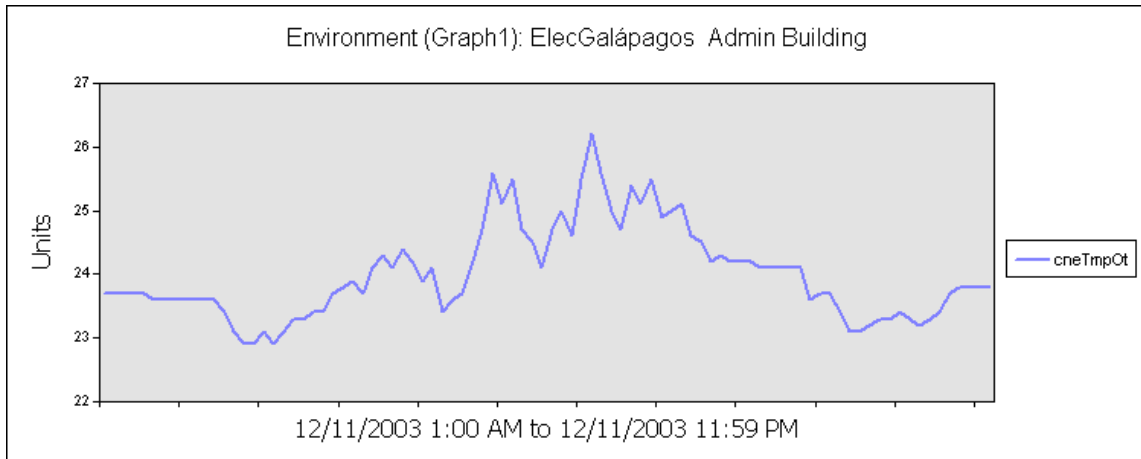


Fig. 26 : Outdoor temperature (units °C) on December, 11

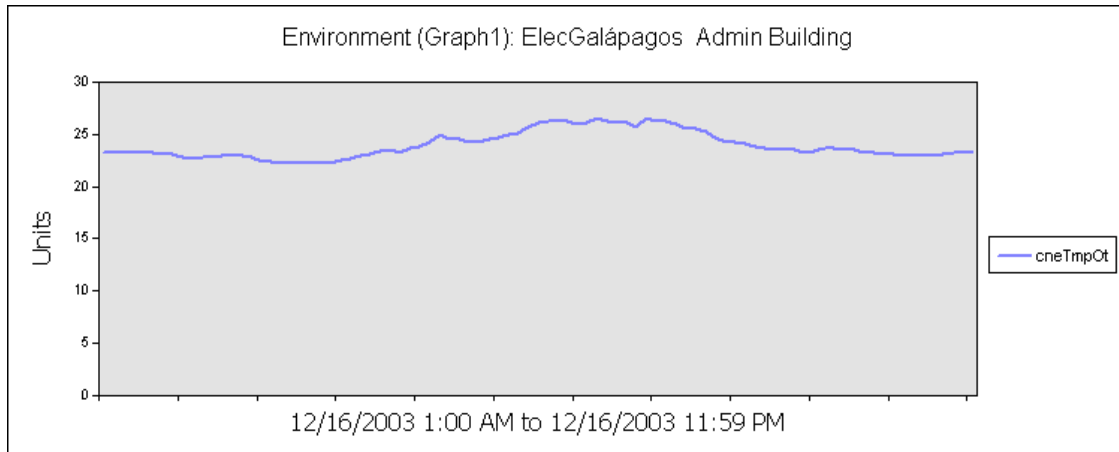


Fig. 27 : Outdoor temperature (units °C) on December, 16

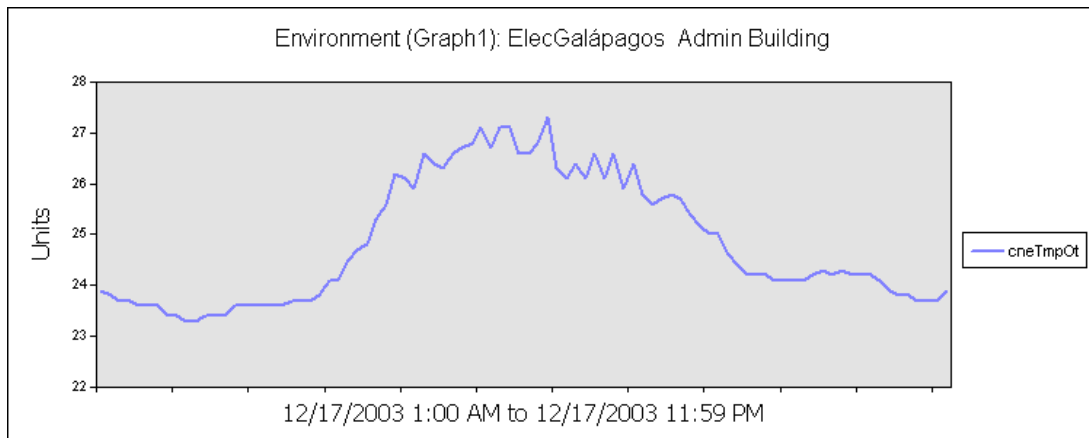


Fig. 28 : Outdoor temperature (Units °C) on December, 17

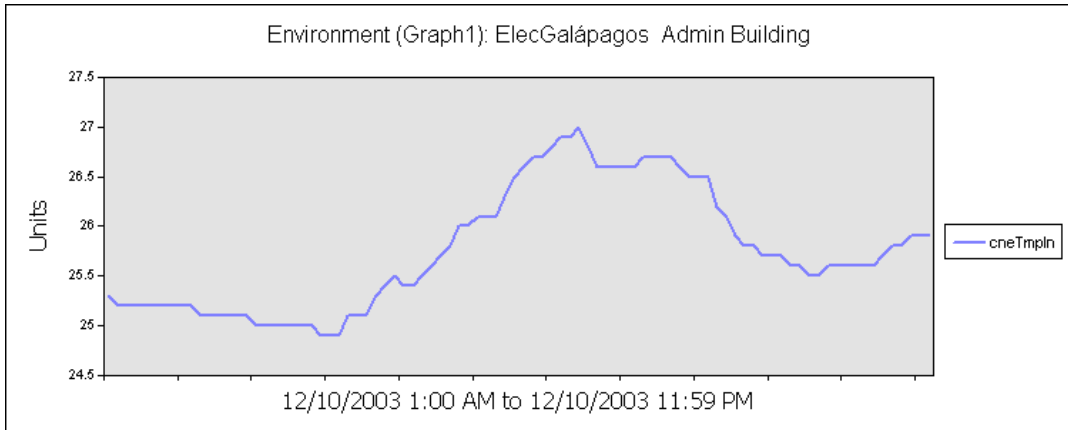


Fig. 29 : Indoor temperature ( units °C ) on December, 10

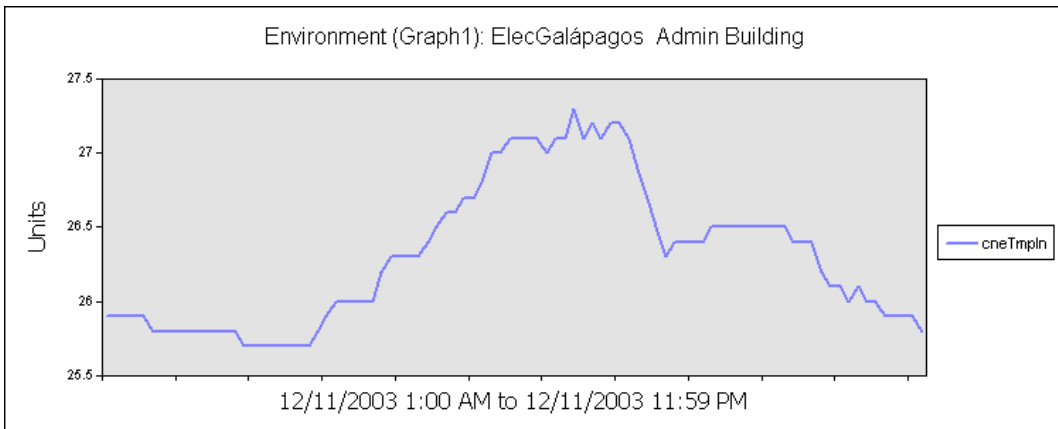


Fig. 30 : Indoor temperature ( units °C ) on December, 11

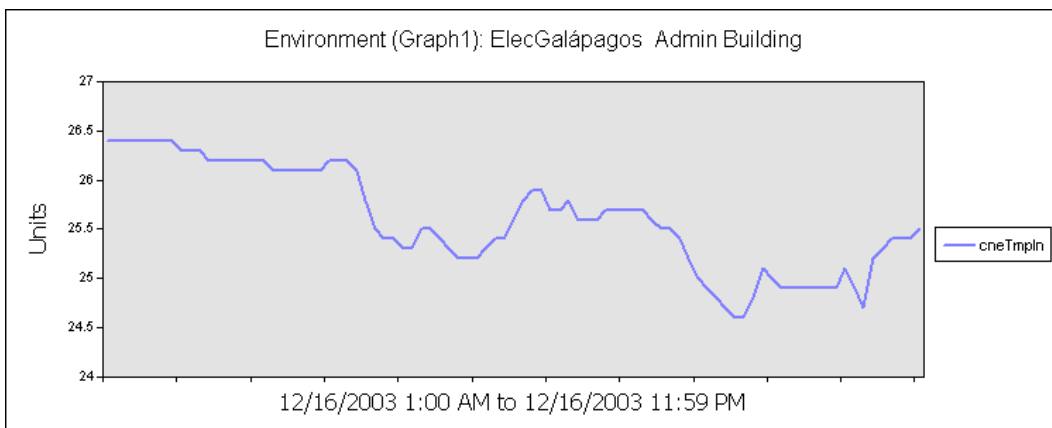


Fig. 31 : Indoor temperature ( units °C ) on December, 16



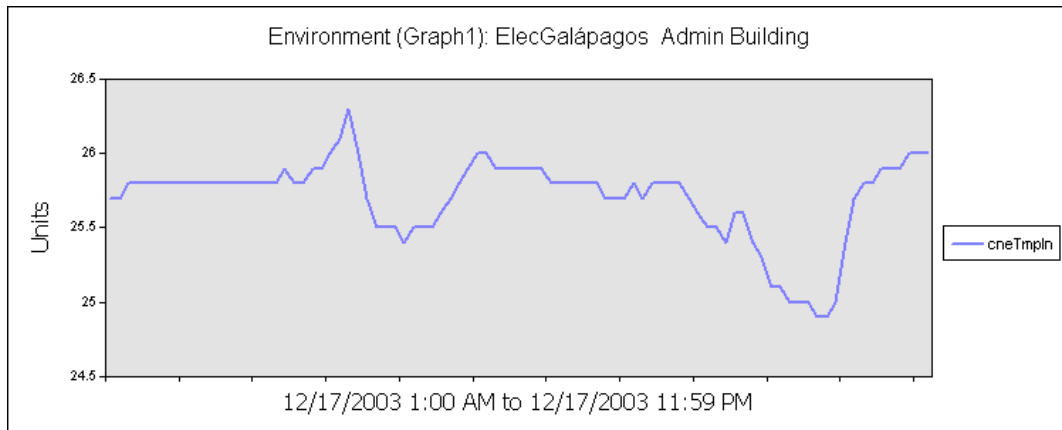


Fig. 32 : Indoor temperature ( units °C ) on December, 17

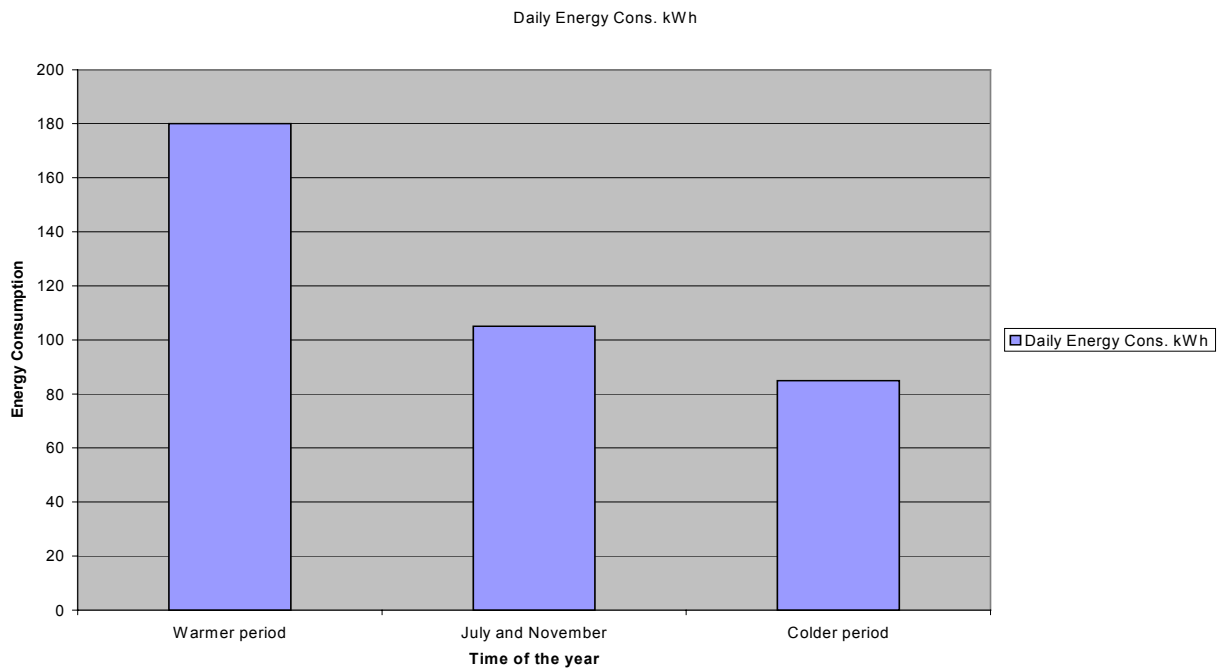


Fig.33 : Impact of air conditioning in the EEPG building daily electric consumption